



Mississippi Headwaters Chapter
Quarterly Chapter Update

www.usgbcmn.org

USGBC - Mississippi Headwaters Chapter
Quarterly Chapter Update

July 21, 2009

U.S. Green Building Council



Mississippi Headwaters Chapter
Quarterly Chapter Update

www.usgbcmn.org

New Chapter Sponsors

Silver



Bronze



U.S. Green Building Council



Mississippi Headwaters Chapter Quarterly Chapter Update

www.usgbcmn.org

Advocacy Committee

Chair: Richard Graves, Perkins + Will

Co-Chair: Julie Perrus, Larkin-Hoffman

Goals:

Fundamental Chapter Advocacy Development:

- Build the Capacity of the Advocacy Committee
- Create and Maintain Partnerships with other organizations
- Educate and Train the Committee on Advocacy
- Create Advocacy Plan for 2010.

Advancement of Sound Green Building Policy:

- Create a Star Communities Forum
- Promote the greening of the building codes.

Participation in and Support of National USGBC Campaigns:

- Establish and Support a Green Schools Caucus
- Support Mayors Green Schools Alliance
- Participate in USGBC Federal Advocacy Day

Members:

Brian Ross
 Jennifer Tuttle
 Jim Keller
 Jim Muelbauer
 John Harrington
 Kevin Flynn
 Lisa Britton
 Marthe Brock
 Michelle Koenig
 Nick Rosenberry
 Nick Williams
 Patrick Compton
 Pete Berger
 Ramez Naguib
 Rebecca Bowers
 Roslyn zumBrunnen
 Todd Wichman
 Tom Lambrecht

U.S. Green Building Council



Mississippi Headwaters Chapter Quarterly Chapter Update

www.usgbcmn.org



Advocacy: Green Residential Committee

Chair: John Harrington, Greater MN Housing Fund

Co-Chair: Joshua Foss, Thrive Design Studio

Luciana Corwin, *Viracon*
 Angela Demonte, *Geen Designs and Supply*
 Sam Kovar, *Uptown Mortgage*
 Jen LeeCallier, *Coldwell Banker Burnet*
 Corri Sandwick, *Albertsson Hansen Architecture*
 Rob Warnke, *Energy Efficient Resources*

U.S. Green Building Council



Mississippi Headwaters Chapter

Quarterly Chapter Update

www.usgbcmn.org



Advocacy: Green Schools Committee

Chair: *Jennifer Anderson-Tuttle, *Senior Associate, Director KKece*

Co-Chair: Peter Berger, *Trane*

Nicholas Banovetz, *Padilla Speer Beardsley*

Bob Bruer, *Spartan Chemical*

Abby Fenton, *Will Steger Foundation*

*Terry Hart, *Kraus Anderson*

*Mohammed Lawal, *KKE Architects*

Joey Vossen, *Larkin Hoffman*

*Gary Zifko, *Kraus Anderson*

Student Representative Group - Spectrum High School

U.S. Green Building Council



Mississippi Headwaters Chapter

Quarterly Chapter Update

www.usgbcmn.org

Education Committee

Chair: Jeffrey O'Brien, *Archigenesis*

NC/CS Sub- Chair: Brent Nasset, *Kimley-Horn*

EB/CI Sub- Chair: Jason Hish, *Johnson Diversey*

Terry Brickman, *PCL Construction*

Carolyn Carim, *Allina Facilities Planning & Construction*

*Greg Guimont, *Doddy Mechanical*

*Ben Sporer, *Landform*

Beth Tomlinson, *LHB, Inc.*

*Wade Anderson, *Gray Plant Mooty*

Lisa Berezni, *Negen Architects*

Paula Harter, *Accessible Environments*

Catherine Davies, *Liesch Associates, Inc.*

Matt Metzger, *Energy Management*

Mark Peterson, *ServiceMaster Clean*

Tony Sjolander

Paul Tyson, *Donaldson Company*

Kathy Endres, *Coldwell Banker Burnet*

Laura Millberg, *Mn Pollution Control*

Jim Plucker, *Hearth & Home*

Ann Sinclair

John Harrington, *Greater MN Housing Fund*

U.S. Green Building Council



Mississippi Headwaters Chapter

Quarterly Chapter Update

www.usgbcmn.org

Emerging Green Builders Committee



Co-Chairs: *Jamey Flannery, *Flannery Construction*
*Matt Nelson, *M.A. Mortenson Company*

Communications: Brian Granquist, *Target Corp.*
*Lindsay Cabel, *Mortenson Construction*

Education: Sarah Kutnink, *R.W. Beck*
Dan Schultz, *Watson-Forsberg*

Design Competition: Tim Chapp, *Leo A Daly*
*Lindsay Cabel, *Mortenson Construction*

Networking: *Andrew Neubarth, *Weis Builders*
Tonya Baker
Justin Lappin, *Diversified Construction*
Julie Perrus, *Larkin Hoffman*
Charla Evenson



U.S. Green Building Council



Mississippi Headwaters Chapter

Quarterly Chapter Update

www.usgbcmn.org

Emerging Green Builders Committee



- Continued LEED v2.2 Study Groups – (2) total in 2009 with one currently underway at Flannery Construction

- EGB Invited to speak at UW-Stout for Sustainable Construction Day (October 2008)

- 2009 Natural Design Competition underway

- Lunch and Learns – Continue to plan and hold quarterly
 - May 6: *Federal Stimulus Money* – presented by Larkin Hoffman

- 4th Annual EGB Celebration – August 20, 2009



U.S. Green Building Council



Mississippi Headwaters Chapter

Quarterly Chapter Update

www.usgbcmmn.org

Marketing & Communications Committee



Chair:
Steve Jackson
SmithGroup

Co-Chair:
Eliza Clark
Paydirt

2009 Committee Members:

- Pam Anderson, 2 9 2 Design Group
- Nick Banovetz, Padilla Speer Beardsley
- Julia Cline, Minneapolis Parks
- Sara Goenner, Designer
- Kathy Jalivay, LaBreche
- *Robyn Johnson, Mortenson Construction
- Vicki Knutsen, Architectural Alliance
- Michelle Koenig, Past Committee Chair
- Krista Krittenbrink, Johnson Controls
- Eric Pasi, Innovative Power Systems
- *Erin Saewert, Mortenson Construction
- Elaine Samolytz, Bonestroo
- Bill Shadid, Consultant
- Carol Stoltzfus, Plants by Design
- Sabra Waldfogel, Independent Writer



U.S. Green Building Council



Mississippi Headwaters Chapter

Quarterly Chapter Update

www.usgbcmmn.org

Membership Committee



Chair: Steve Schreurs, *Engineering Design Initiative*

Meet Last Friday Each Month (EDI and Teleconference)

- Bud Brasch, *Raynie Day*
- Dan Osterman, *Strack Companies*
- *Pete Dahl, *Sebesta Blomberg*
- *Emily Eisenmenger, *Mortenson Construction*
- Ken Kaufman, *Automated Logic*
- Mark Kretschmer, *Barr Engineering*
- Mark McGough, *McGough & Associates*
- *Jason McMillen, *Stahl Construction*
- *Bill Nelson, *S&T Office Interiors*
- Janice Pyka, *Fidelity Building Services*

U.S. Green Building Council



Mississippi Headwaters Chapter

Quarterly Chapter Update

www.usgbcmmn.org

Networking Committee



Co-Chairs: Elizabeth Tomlinson, *LHB, Inc.*
Gretchen Camp, *BKV Group*

Meetings: Fourth Thursday of Each Month (Como Pavilion)

Members:

Pam Burke, *Mike's Clean Sweep*
Lorin Culver, *Landscape Architect*
Tom Harrington, *AHI Facilities Services*
Phil Kirkegaards, *Residential Services, Inc.*
Oram Miller, *Environmental Design*
Mark McGough, *McGough & Associates*
**Tricia Motz, Ryan Companies*
Mark Peterson, *ServiceMaster Corp.*
**Corey Ruff, Knutson Construction*
Darren Shavor, *Steelcase*
Nick Williams, *Prevolv*



U.S. Green Building Council



Mississippi Headwaters Chapter

Quarterly Chapter Update

www.usgbcmmn.org

Circle of Excellence Award

Nominees:

Carolyn Carim, Education
Wade Anderson, Education
Adam Fransen, Commercial Real Estate
Richard Graves, Advocacy
Steve Jackson, Marketing & Communications
Sarah Kutnink, Emerging Green Builders
Julie Perrus, Advocacy
Nick Banovetz, Marketing & Communications
Vicki Knutsen, Marketing & Communications

U.S. Green Building Council



Mississippi Headwaters Chapter
Quarterly Chapter Update

www.usgbcmn.org

Circle of Excellence Award

Presented to:

Richard Graves
Advocacy Committee Chair

In recognition of your volunteer contributions to the Mississippi Headwaters Chapter of the U.S. Green Building Council through your dedicated service and leadership.

Awarded: July 21, 2009

Sheri Brezinka, Executive Director

U.S. Green Building Council



Mississippi Headwaters Chapter
Quarterly Chapter Update

www.usgbcmn.org

Circle of Excellence Award

Presented to:

Steve Jackson
Marketing & Communications Committee Chair

In recognition of your volunteer contributions to the Mississippi Headwaters Chapter of the U.S. Green Building Council through your dedicated service and leadership.

Awarded: July 21, 2009

Sheri Brezinka, Executive Director

U.S. Green Building Council



Mississippi Headwaters Chapter
Quarterly Chapter Update

www.usgbcmmn.org

Circle of Excellence Award

Presented to:

Carolyn Carim
Education Committee Member

In recognition of your volunteer contributions to the Mississippi Headwaters Chapter of the U.S. Green Building Council through your dedicated service and leadership.

Awarded: July 21, 2009

Sheri Brezinka, Executive Director
U.S. Green Building Council

Regional Priority Credits Minnesota

Presented by:
Sheri Brezinka, Executive Director,
USGBC Mississippi Headwaters Chapter

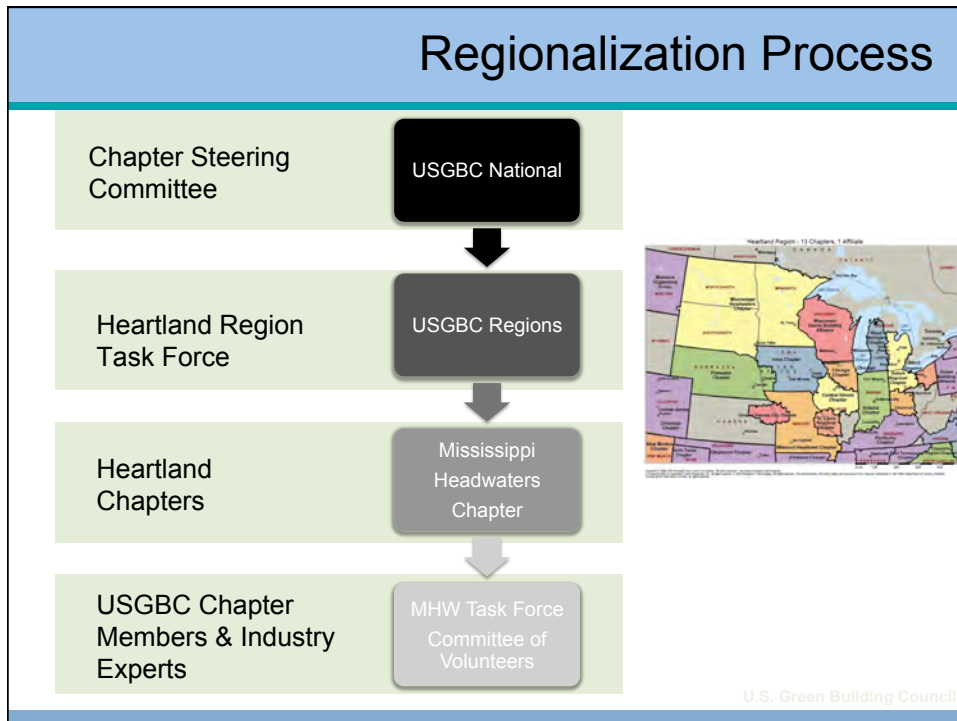
Steve Jackson, SmithGroup



**Mississippi
Headwaters
Chapter**

U.S. Green Building Council

Regionalization Process

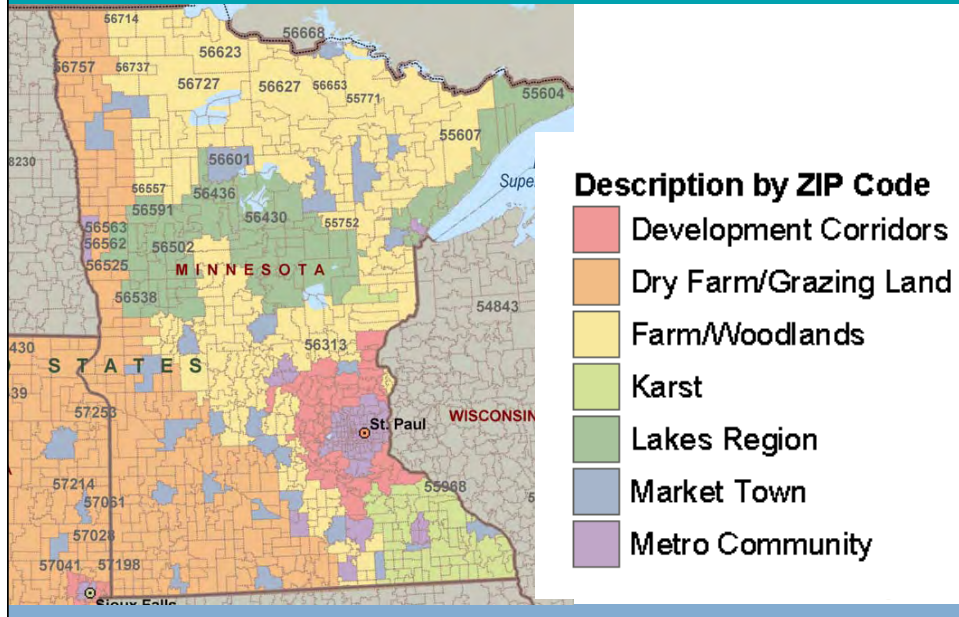


Mission – MN Regionalization TF

- **Collect data:**
 - Zip Codes
 - GIS
 - Issues related maps & data
- **Create:**
 - Regional Environmental Zones to include all zip Codes
 - Key issues for each Zone
- **Identify:**
 - Credits for each Zone & Rating System
 - 6 Credits - NC (includes C&S & Schools); CI; EBOM
 - Existing credits (no new credits)
 - List of credits allowed to incentivize
- **Provide justification**
- **Do it in approximately a month & a half . . .**

U.S. Green Building Council

MN Environmental Zones



Development Corridors

- **Key Issues:**

- This zone is experiencing strong development pressures along transportation corridors immediately adjacent to major metropolitan areas.
- Loss of prime agricultural land, habitat destruction, impaired water quality, and erosion caused by stormwater are key issues.
- Water conservation and energy production are critical in rapidly developing areas to reduce infrastructure strain
- Daylight is important for the health of building occupants in this northern state and more likely to be ignored along transportation corridors than in scenic areas.



U.S. Green Building Council

Credits:



Development Corridors

LEED for New Construction, Core & Shell and Schools	LEED for Commercial Interiors	LEED for Existing Buildings: Operations & Maintenance
SS1: Site Selection	SS1: Site Selection-Option 1 LEED Certified Building	SS5: Site Development-Protect or Restore Open Habitat
SS5.1: Site Development: Protect/Restore Habitat	SS3.1 Alternative Transportation: Public Transportation Access	SS2: Bldg Exterior and Hardscape Management Plan
SS6.1: Stormwater Design: Quantity Control	WE1: Water Use Reduction @40%	SS6: Stormwater Quantity Control
WE3: Water Use Reduction @30%	MR5 Regional Materials: 20% manufactured, 10% extracted	WE2: Additional Indoor Plumbing Efficiency @30%
EA2: On-site Renewable Energy @9%	EQ8.1: Daylight and Views-Daylight @75%	EA1: Optimize Energy Performance @95+/45%
EQ8.1: Daylight and Views-Daylight	MR2: Construction Waste Management @75%	EA 4: Onsite Renewable Energy @6% or 50%



Dry Farm/Grazing Land



- **Key Issues:**

- Protection of agricultural land
- Eco-system sensitive to moisture flow and erosion
- Lack of consistent and plentiful precipitation

Credits:



Dry Farm/Grazing Land

LEED for New Construction, Core & Shell and Schools	LEED for Commercial Interiors	LEED for Existing Buildings: Operations & Maintenance
SS1: Site Selection	SS1 – Path 8: Water Efficient Landscaping- No Potable Water Use or Irrigation	SS2: Bldg Exterior and Hardscape Management Plan
WE1: Landscape, No Potable Water or Irrigation	SS1-Path 11: On-site Renewable Energy	SS5: Site Development- Protect or Restore Open Habitat
WE3: Water Use Reduction @30%	WE1: Water Use Reduction @40%	SS6: Stormwater Quantity Control
EA2: Onsite Renew. Energy @9%	MR2: Construction Waste Management @50%	WE2: Additional Indoor Plumbing Efficiency @30%
MR 5: Regional Materials: 20% manufactured, 10% extracted	EQ8.1: Daylight and Views- Daylight @75%	EA1: Optimize Energy Performance @95+/45%
EQ8.1: Daylight and Views – Daylight	EQ7.1: Thermal Comfort- Design	EA4: Onsite Renewable Energy @ 6% or 50%



Farm/Woodlands



• Key Issues:

- Preserving open space and fertile agricultural land
- Maintaining appropriate water runoff
- Managing contiguous forested tracts

Credits:



Farm/Woodlands

LEED for New Construction, Core & Shell and Schools	LEED for Commercial Interiors	LEED for Existing Buildings: Operations & Maintenance
SS1: Site Selection	SS1-Path 8: Water Efficient Landscaping - No Potable Water Use or Irrigation	SS2: Bldg Exterior and Hardscape Management Plan
SS5.1 Site Development , Protect or Restore Habitat	SS1-Path 11: On-site Renewable Energy	SS5: Site Development – Protect or Restore Open Habitat
MR1.2: Building Re-Use	WE1: Water Use Reduction @40%	SS6: Stormwater Quantity Control
MR 5: Regional Materials: 20% manufactured, 10% extracted	MR2: Construction Waste Management @50%	WE2: Additional Indoor Plumbing Efficiency @30%
EA2: Onsite Renew. Energy @9%	EQ8.1: Daylight and Views @75%	EA1: Optimize Energy Performance @95+/45%
EQ8.1: Daylight and Views - Daylight	EQ7.1: Thermal Comfort- Design	EA4: Onsite Renewable Energy @6% or 50%



Karst



• Key Issues:

- Karst is a unique geologic condition characterized by highly fractured bedrock that allows rapid movement of stormwater, irrigation water, and wastewater to groundwater aquifers
- Sink holes are visual manifestations of a Karst region
- Stormwater needs to be infiltrated diffusely with pre-treatment to remove pollutants
- Water conservation strategies that reuse grey water for landscaping and/or reduce the dilution of waste with water can be problematic with Karst geology

Credits:

Karst

LEED for New Construction, Core & Shell and Schools	LEED for Commercial Interiors	LEED for Existing Buildings: Operations & Maintenance
SS1: Site Selection	MR3.2: Materials Reuse – F&F	SS2: Bldg Exterior and Hardscape Management Plan
SS5.1: Site Development, Protect or Restore Habitat	SS1-Path 8: Water Efficient Landscaping - No Potable Water Use or Irrigation	SS5: Site Development – Protect or Restore Open Habitat
SS5.2: Site Development – Maximize Open Space	WE1: Water Use Reduction @40%	SS6: Stormwater Quantity Control
SS6.2: Stormwater Design-Quantity Control	MR2: Construction Waste Management @50%	WE2: Additional Indoor Plumbing Efficiency @30%
EA2: On-Site Renewable Energy @9%	EQ8.1: Daylight and Views-Daylight @75%	EA1: Optimize Energy Performance @95+/45%
MR1: Building Reuse @75%	EQ7.1: Thermal Comfort-Design	EA4: Onsite Renewable Energy @6% or 50%

Lakes Region



• Key Issues:

- Heavy development pressures are threatening water quality of lakes and rivers
- Region characterized by chains of lakes and marshlands interspersed with cities and towns
- Stormwater and habitat issues are particularly important in this zone
- Construction waste is an issue, but landfill fees are low
- This scenic region is a popular tourist and summer get-away destination

Credits:



Lakes Region

LEED for New Construction, Core & Shell and Schools	LEED for Commercial Interiors	LEED for Existing Buildings: Operations & Maintenance
SS1: Site Selection	MR3.2: Materials Reuse – F&F	SS2: Bldg Exterior and Hardscape Management Plan
SS5.1 Site Development, Protect or Restore Habitat	SS1-Path 8: Water Efficient Landscaping - No Potable Water Use or Irrigation	SS5: Site Development – Protect or Restore Open Habitat
SS5.2: Site Development –Maximize Open Space	WE1: Water Use Reduction @40%	SS6: Stormwater Quantity Control
SS6.1: Stormwater Design – Quantity Control	EQ7.1: Thermal Comfort - Design	WE2: Additional Indoor Plumbing Efficiency @30%
SS6.2: Stormwater Design – Quality Control	EQ8.1: Daylight and Views – Daylight @75%	EA1: Optimize Energy Performance @95+/45%
MR2: Construction Waste Management @50%	MR2 Construction Waste Management @50%	EA4: Onsite Renewable Energy @6% or 50%

Market Town



- **Key Issues:**

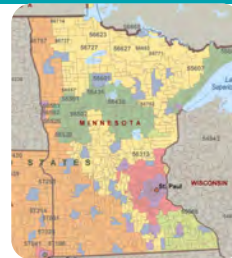
- Potential Urban Sprawl
- Water runoff exasperates natural runoff waterways
- Dependent upon remote energy sources
- Located among undisturbed natural resources, impacting environmental balance
- Surrounding land space under pressure for new construction

Credits:

Market Town

LEED for New Construction, Core & Shell and Schools	LEED for Commercial Interiors	LEED for Existing Buildings: Operations & Maintenance
SS1: Site Selection	MR3.2: Materials Reuse F&F	EQ2.4: Daylight and Views
SS5.1 Site Development - Protect or Restore Habitat	SS1-Path 8: Water Efficient Landscaping - No Potable Water Use or Irrigation	SS5: Site Development – Protect or Restore Open Habitat
SS6.1: Stormwater Design – Quantity Control	WE1: Water Use Reduction @40%	SS6: Stormwater Quantity Control
EA2: Onsite Renewable Energy @9%	EQ7.1: Thermal Comfort- Design	WE2: Additional Indoor Plumbing Efficiency @30%
MR1: Building Reuse @ 75%	EQ8.1: Daylight and Views – Daylight @75%	EA1: Optimize Energy Performance @95+/45%
MR5.2: Regional Materials: 20% manufactured, 10% extracted	MR2 Construction Waste Management @50%	EA4: Onsite Renewable Energy @6% or 50%

Metro Community



• Key Issues:

- Urban sprawl reducing biodiversity and natural water filtration and runoff patterns
- Transportation requirements increasing impervious cover and heat islands
- High population density and resource consumption in increasingly concentrated spaces
- Increased energy consumption per unit space

Credits:



Metro Community

LEED for New Construction, Core & Shell and Schools	LEED for Commercial Interiors	LEED for Existing Buildings: Operations & Maintenance
SS6.1: Stormwater Design –Quantity	MR3.2: Materials Reuse – F&F	EQ2.4: Daylight and Views
SS6.2: Stormwater Design - Quality	SS1-Path 8: Water Efficient Landscaping - No Potable Water Use or Irrigation	SS2: Building Exterior and Hardscape Management Plan
WE1: Water Efficient Landscape, No Potable Water Use or Irrigation	WE1: Water Use Reduction @40%	SS6: Stormwater Quantity Control
MR: Construction Waste Management @75%	EQ7.1: Thermal Comfort	WE2: Additional Indoor Plumbing Efficiency @30%
MR5.2: Regional Materials: 20% manufactured, 10% extracted	EQ8.1: Daylight and Views – Daylight @75%	EA1: Optimize Energy Performance @95+/45%
EQ8.1: Daylight and Views - Daylight	MR2: Construction Waste Management @75%	EA4: Onsite Renewable Energy @6% or 50%

Regionalization – Next Steps

- LEED ND Regional Priority Credits currently under way
- Vette Current Information Online
- Each Chapter to Continue Team
- LEED 2011
- Analyze Regionalization as it is used
- Our Regions are Interconnected
- You are Our Leadership

Questions?

U.S. Green Building Council

Upcoming Programs

- Chapter Annual Meeting - October
- Upcoming Tours
 - Julkowski Residence –LEED Homes
 - Blue Apartments
July 28, 3:30 - 7:30 p.m.
- Member-to-Member LEED Credit Lecture
Thursday mornings starting July 23rd through November 5th
- Green Lease Workshop
July 29 – 8-noon
- MN Real Estate Journal's Energy Conference
July 31 – 7:30-noon

U.S. Green Building Council



Mississippi Headwaters Chapter Quarterly Chapter Update

www.usgbcmn.org

Contact Us

Email: info@usgbcmn.org

Phone: (952) 564-3049

Fax: (952) 252-8096

Mail: USGBC- Mississippi Headwaters Chapter
c/o IntrinXec Management
5353 Wayzata Blvd., Suite 207
Minneapolis, MN 55416

Please return your badges to the registration desk – we reuse them at each meeting. Thank you!

U.S. Green Building Council